

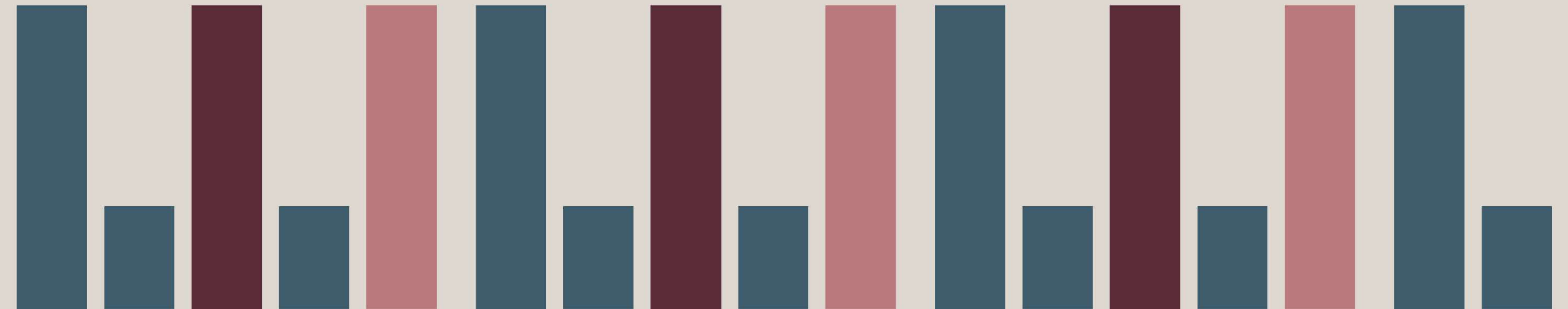
# THE DECK SOHO

W•R•E

REDEFINED

A MAPP company

A W•Flex Building – Operated by RE-DEFINED.



# THE DECK SOHO

8 - 14 MEARD STREET, LONDON, W1F 0EQ

## AT A GLANCE

The Deck Soho is home to sensitively designed, light-filled modern offices perched above an alleyway right in the centre of Soho.

- Modern managed office space
- Self-contained floors with dedicated kitchen and meeting rooms
- Communal space with onsite barista and beer taps

## PRIME LOCATION

If there is a better location for a Soho workspace, we've yet to find it.

The Deck Soho is less than 10 minutes' from:

-  Tottenham Court Road
-  Oxford Circus
-  Leicester Square

## ADDED EXTRAS

Turning to amenities and facilities, The Deck Soho is the complete package.

The building features secure internal bike storage, changing and shower facilities, a dedicated Parent's Room, printing, Wi-Fi throughout, meeting spaces and a spacious and light-filled lounge on the Ground Floor for all members.

## RE-DEFINED SPACES

A RE-DEFINED building takes itself seriously.

We pride ourselves on high-quality finishes, sustainable materials, a no-expense-spared approach to technology, infrastructure and connectivity, simplified financial management and - above all - a best-in-class Operations approach.



# WORKING AT THE DECK SOHO

## SPACES AT THE DECK

The Suites themselves have clean lines, exposed black beams, open brickwork and industrial details that allow the historic bones of the building to seep back in.

The first, and fourth floor Suites also each feature private outdoor terraces. On the higher floors, each terrace is nestled into the rooftops of Soho, with skyline views where traditional church spires and weathervanes intermix with glistening skyscrapers.

**We redefine the workspace as you know it; delivering unparalleled working environments in beautifully designed, sustainable spaces.**

**As a MAPP company, we benefit from 25 years of experience and scale. As a leader in sustainability, we are proud to be a certified B Corp – the first and only major UK real estate consultancy to achieve that.**

## AVAILABILITY

We currently have available:

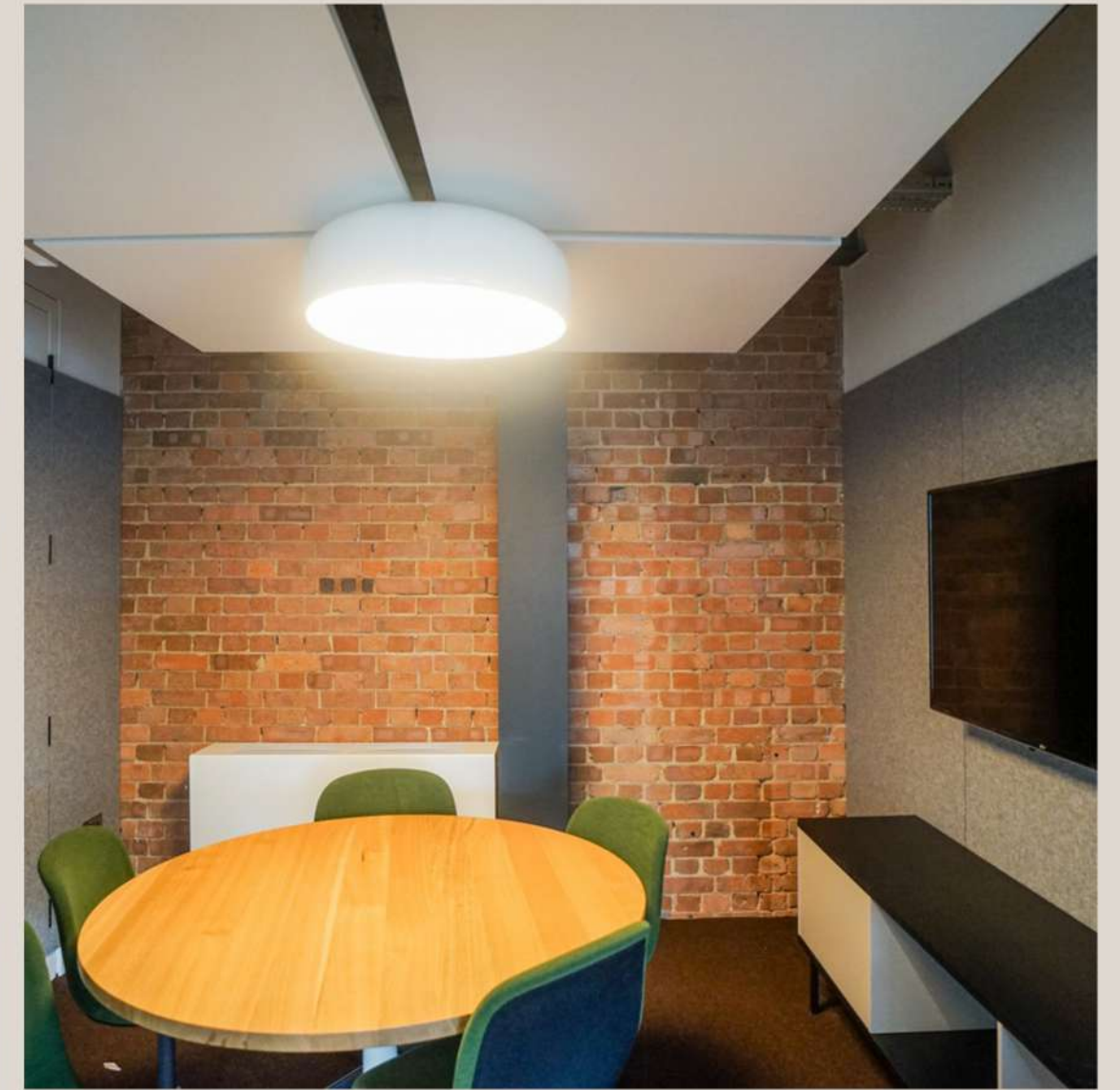
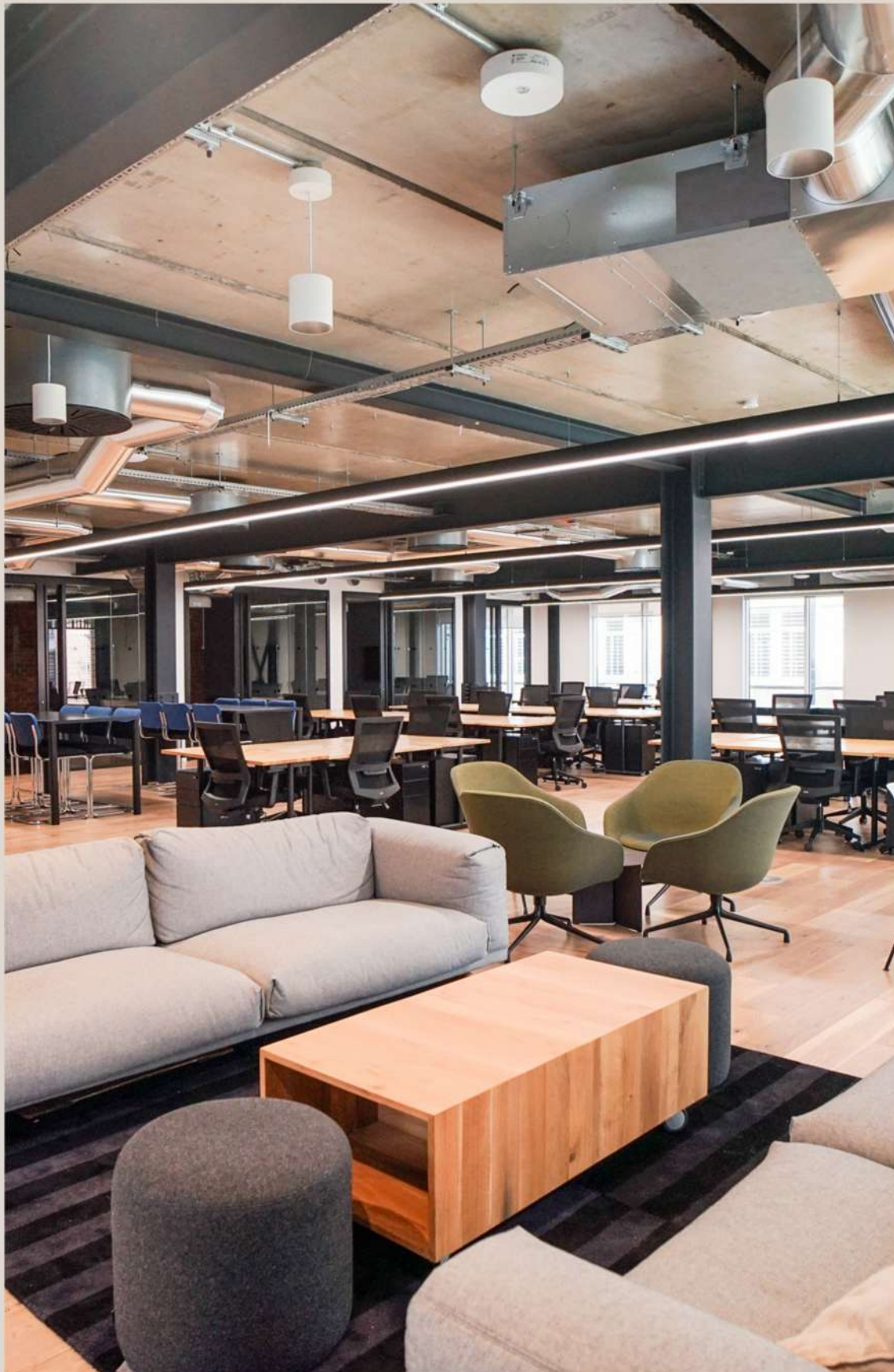
- Ground Floor: 38 workstations / 1,928 sqft
- First Floor: 46 workstations / 3,056 sqft
- Second Floor: 51 workstations / 3,019 sqft
- Fourth Floor: 36 workstations / 1,723 sqft

Enterprise Suites are available to rent from £1,000 per desk.

## STREAMLINED FINANCES

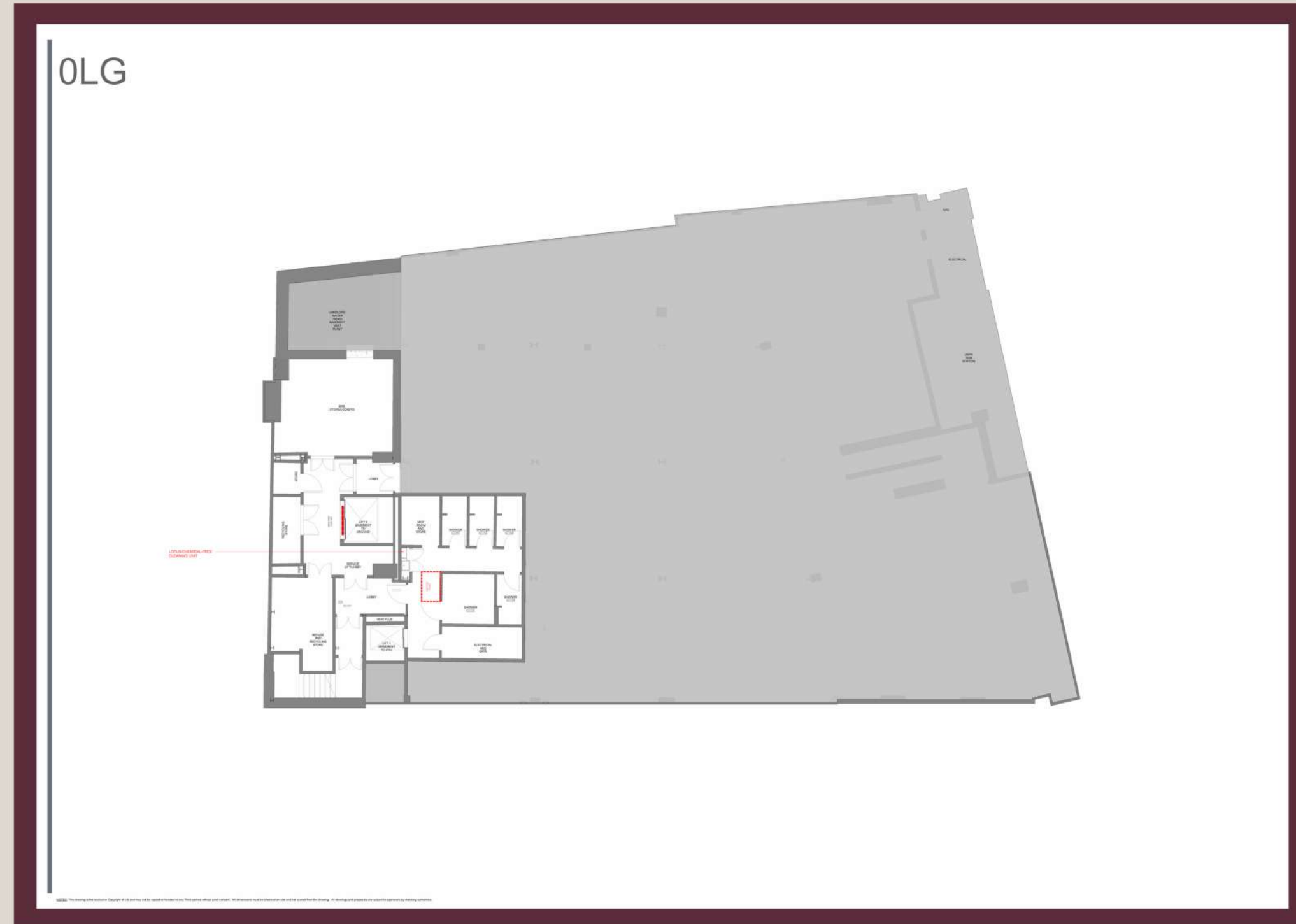
Terms starting from 12 months. Inclusive rent including:

- Rent
- Service charges and insurance
- Business Rates
- Utilities
- Consumables including weekly stocking of tea, coffee, fruit, milk
- Wireless connectivity, IT & data, security & access control
- Cleaning
- Facilities management - i.e. maintenance, repairs and health & safety
- Furniture
- 24h access
- Secure bicycle storage
- Shower and changing facilities
- Call-booths
- Cafe and breakout area
- Retro videogame arcade
- Parent's Room
- On-site Community Team



# FLOORPLANS

## LOWER GROUND FLOOR



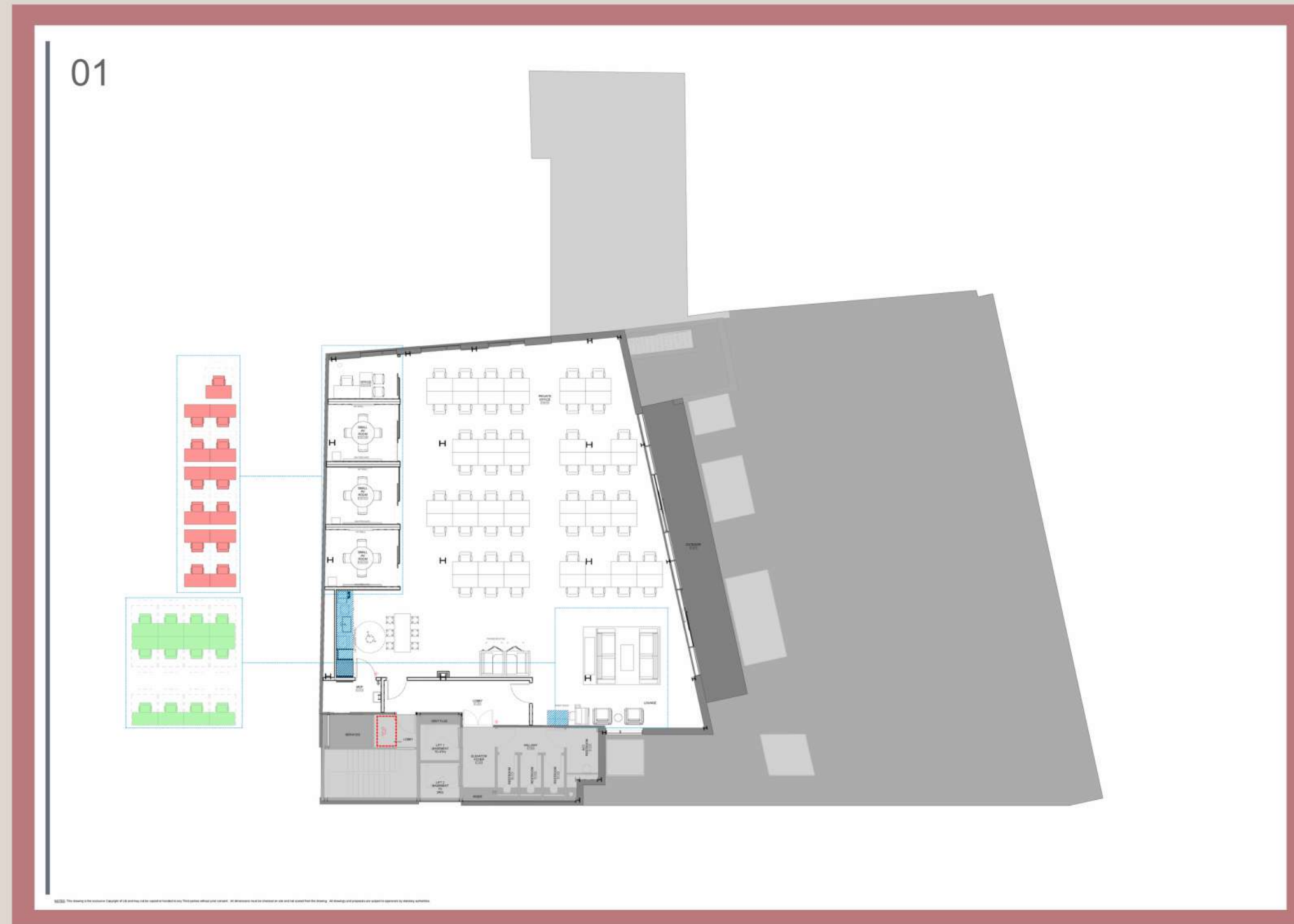
# FLOORPLANS

## GROUND FLOOR



# FLOORPLANS

## FIRST FLOOR



# FLOORPLANS

## SECOND FLOOR





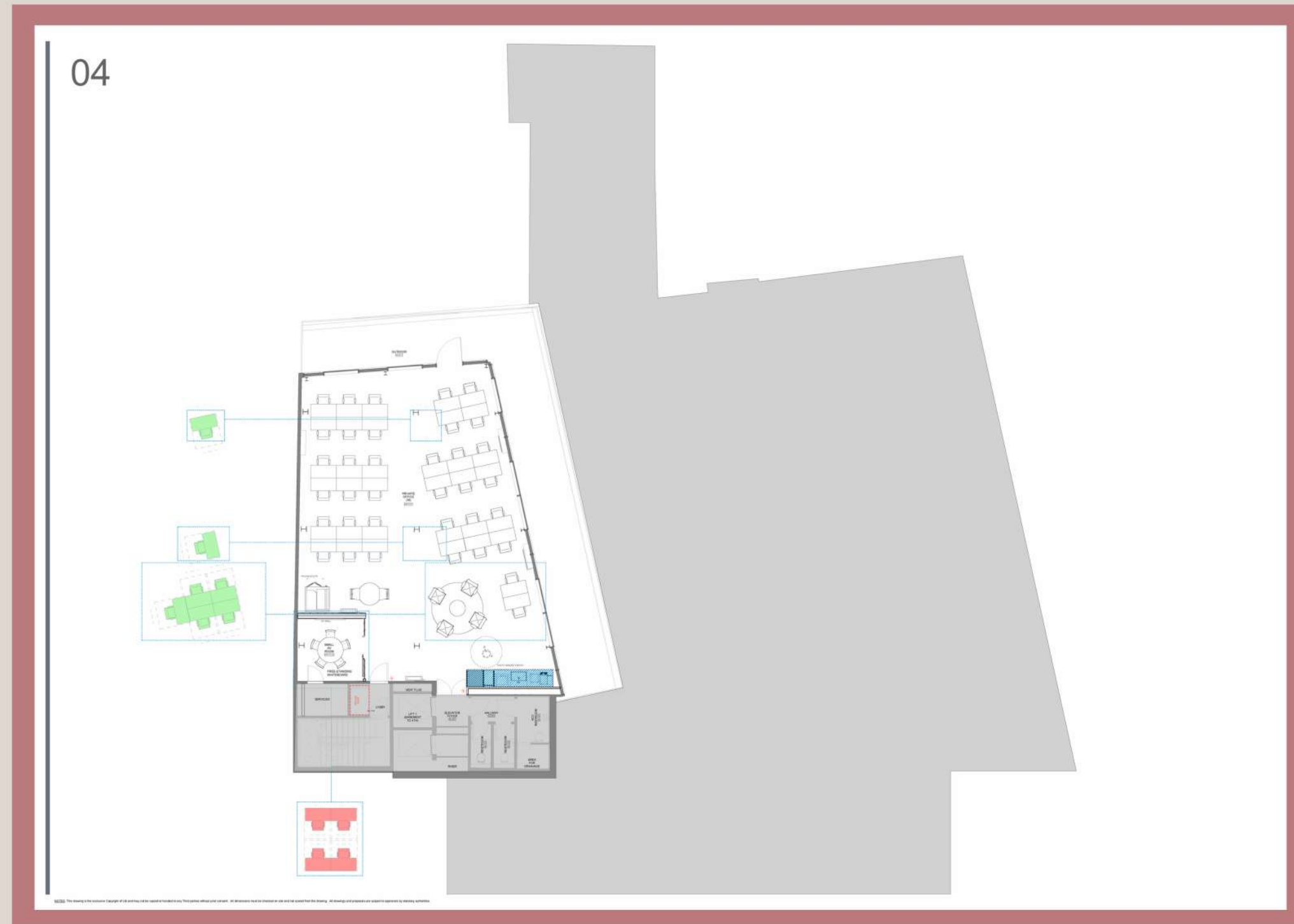
# FLOORPLANS

## THIRD FLOOR



# FLOORPLANS

## FOURTH FLOOR



# CONTACT

For more information on The Deck Soho, please get in touch.

**Ainsley Sutherland**  
Sales & Leasing Manager

[ainsley@re-defined.co.uk](mailto:ainsley@re-defined.co.uk)

020 7908 5597

07977 760894



W · FLEX

FLEX BY MAPP LLP trading as RE-DEFINED LLP  
April 2024

