

Parklife Putney

Operated by RE-DEFINED

Parklife Putney

116 Putney Bridge Rd, London SW15 2NQ

At a glance

Parklife is set in the riverside neighbourhood of Putney in South West London.

A lush and green development, Parklife epitomises a work-life balance ethos, creating creative communities in neighbourhoods across the capital.

Prime location

Situated in the heart of Putney and only a stone's throw from the banks of the River Thames, Parklife Putney offers easy access to both central London, and beyond.



Working at Parklife Putney

Spaces at Parklife Putney

Spaces at Parklife Putney are designed with work-life at the heart; spaces look out onto sweeping green views, natural light pours in, and each area has a light, clean and serene feel.

The occupier experience – both as individuals and as a business – is paramount at Parklife.

We've focussed on the extra-curricular activities too, with a best-in-class rooftop terrace and on-site restaurant blended seamlessly into the design.



Working at Parklife Putney



Added extras

At the heart of the building is a landscaped area offering a place to enjoy a coffee, chat with colleagues or simply relax amongst the greenery.

This is a workspace that welcomes everyone, integrating nature into the building, promoting wellbeing and sustainability for the benefit of our occupiers and the wider community.

Working at Parklife Putney

Availability

At Parklife Putney we're pleased to present a range of immaculately designed spaces, suiting teams from 10 people to 50.

All of our spaces come fully furnished, finished, connected and ready to move into.

Our spaces also allow teams full access to Parklife Putney's range of on-site amenities and facilities, at no extra cost.



Working at Parklife Putney

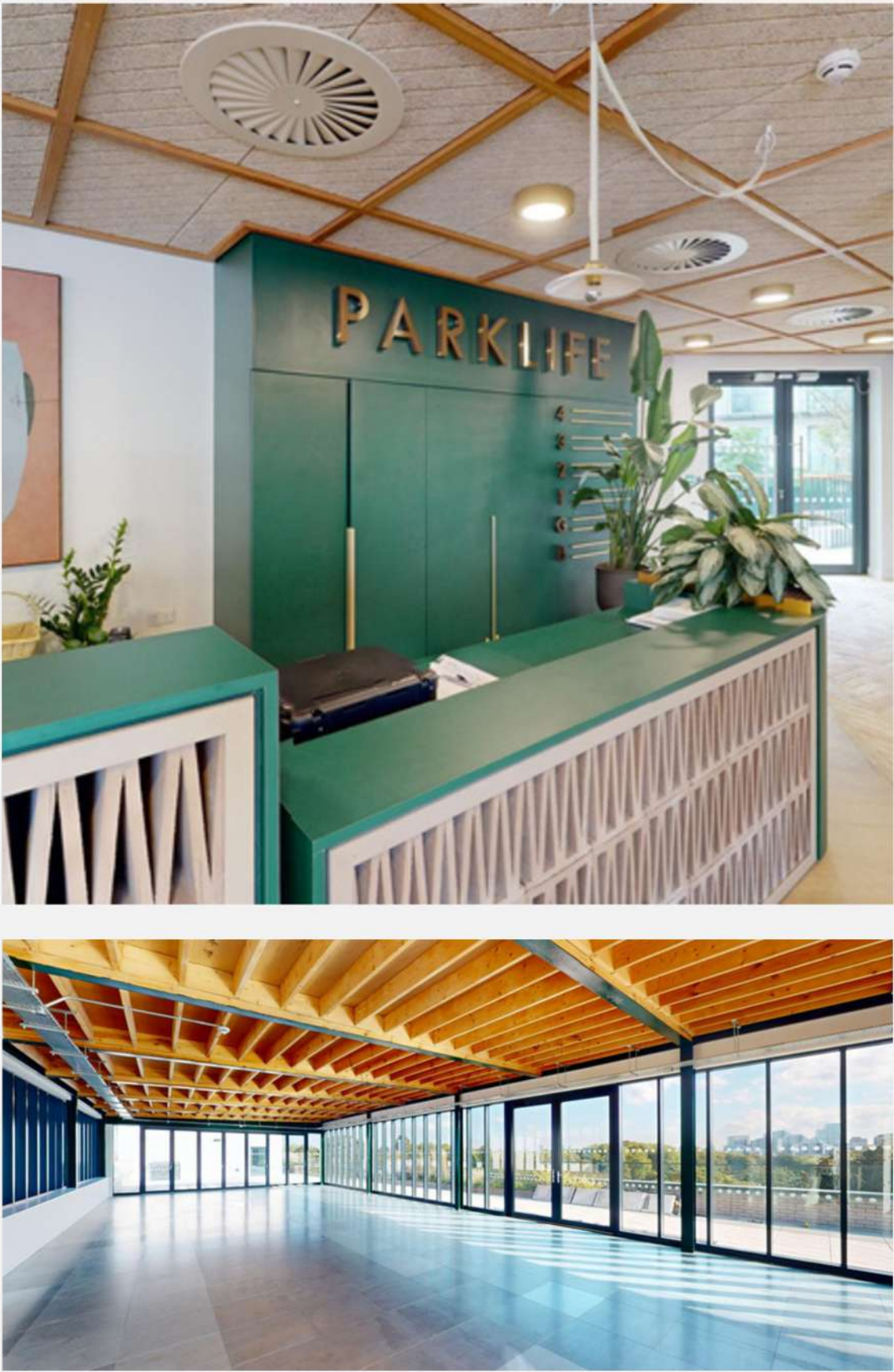
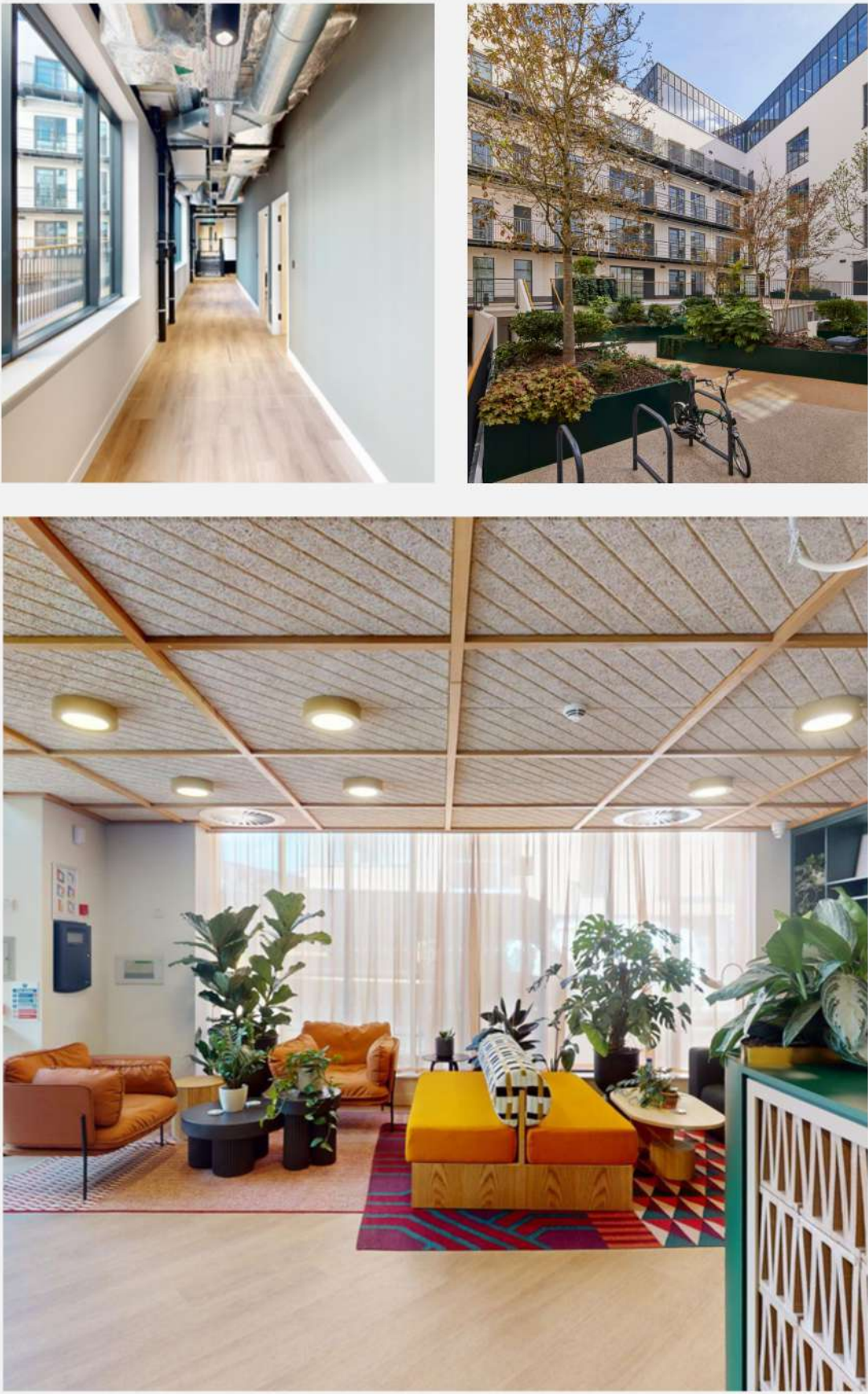


Streamlined finances

Terms starting from 12 months.

Inclusive rent including:

- Rent
- Service charges and insurance
- Business Rates
- Utilities
- Consumables including weekly stocking of tea, coffee, fruit, milk
- Wireless connectivity, IT & data, security & access control
- Cleaning
- Facilities management - i.e. maintenance, repairs and health & safety
- Furniture
- 24h access
- Central Courtyard
- Rooftop bar and restaurant



Floorplans

Ground Floor



Floorplans

First Floor



Contact

For more information on Parklife Putney, please get in touch.

Ainsley Sutherland

Sales & Leasing Manager

ainsley@re-defined.co.uk

020 7908 5597

07977 760894

REDEFINED
A MAPP company



FLEX BY MAPP LLP trading as RE-DEFINED LLP
February 2025
