

# 24 King William Street

Operated by RE-DEFINED

---

# 24 King William Street

London, EC4R 9AT

## At a glance

Recently refurbished to the highest of standards, 24KWS offers sleek, no-nonsense workspace, for businesses wanting an edge.

- Managed office space for larger teams
- Dedicated meeting rooms
- Communal space and bookable meeting rooms

## Prime location

24 King William Street is found directly on top of Monument station, and a stone's throw from the River Thames.



Bank

Cannon Street

Monument





# Working at 24 King William Street

## Spaces at 24 King William Street

The interior scheme is tastefully designed, with a grown up, timeless appeal, and no expense spared.

Contemporary furnishings come courtesy of a boutique Portuguese outfit, and offer a subtle interplay with the building's classically British sensibilities.

The offices themselves look out down the wide Square Mile avenues towards the River Thames, and are flexible to a business' needs both in terms of layout, and decor.





# Working at 24 King William Street



## Added Extras

24KWS features secure bicycle storage, on-demand printing, high-speed WiFi, showers and changing facilities.

Completing the offering neatly - a dedicated on-site Manager, with encyclopedic knowledge of the space, area and set-up, allowing you to focus solely on your business.



# Working at 24 King William Street

## Availability

At 24 King William Street we have only one exquisitely presented suite available, suitable for a team of 40, and complete with 2 dedicated meeting rooms and access to our shared amenities and services.

The space is presented to the highest standard, and is move-in ready.





# Working at 24 King William Street



## Streamlined finances

Terms starting from 12 months.

Inclusive rent including:

- Rent
- Service charges and insurance
- Business Rates
- Utilities
- Consumables including weekly stocking of tea, coffee, fruit, milk
- Wireless connectivity, IT & data, security & access control
- Cleaning
- Facilities management - i.e. maintenance, repairs and health & safety
- Furniture
- 24h access
- Secure bicycle storage
- Shower and changing facilities
- Break out Lounge space
- Disabled Access
- On-site Community Team



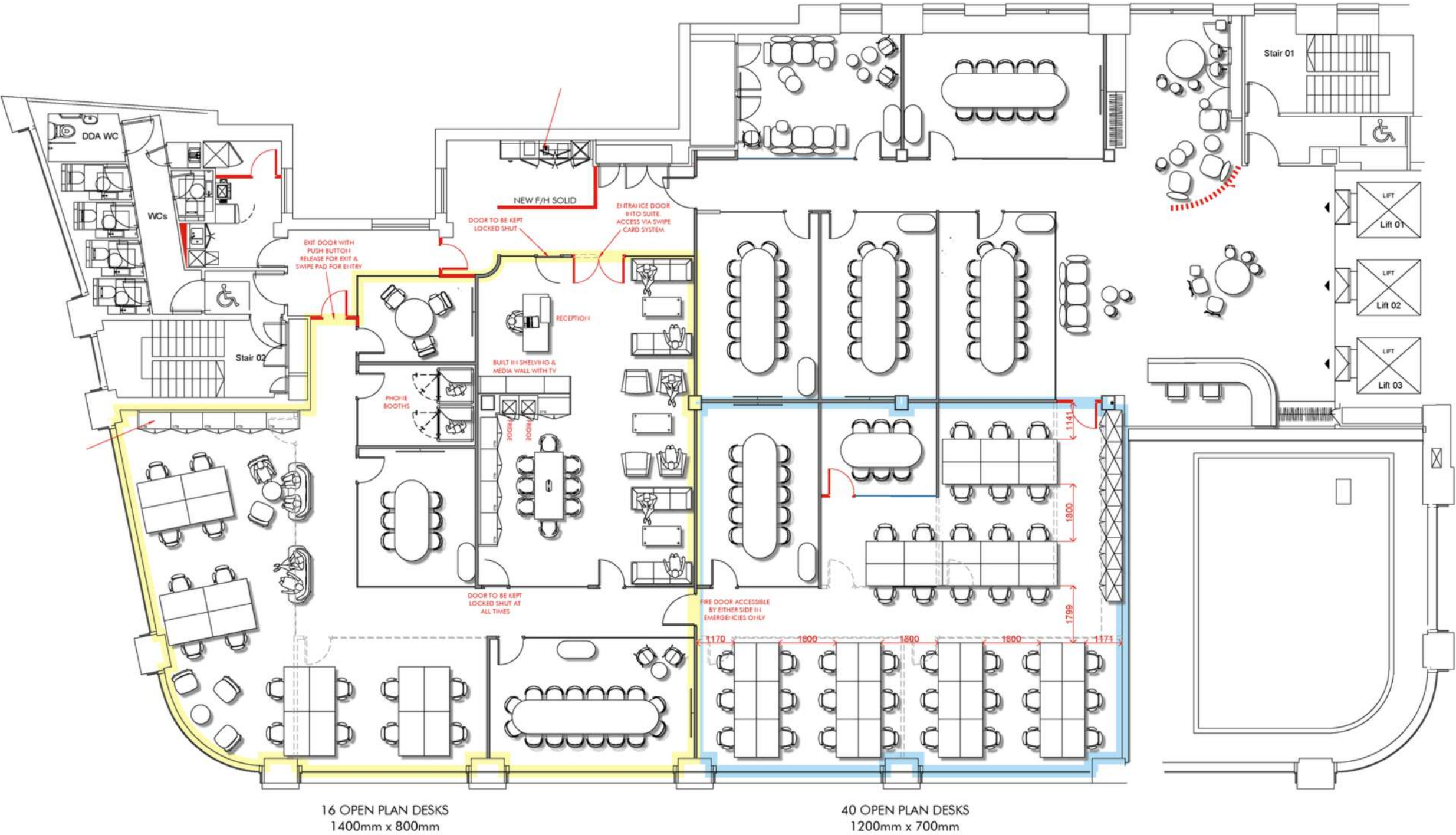






# Floorplans

## First Floor





# Contact

For more information on 24 King William Street, please get in touch.

## Ainsley Sutherland

Sales & Leasing Manager

**[ainsley@re-defined.co.uk](mailto:ainsley@re-defined.co.uk)**

020 7908 5597

07977 760894



FLEX BY MAPP LLP trading as RE-DEFINED LLP  
February 2025

---