

180 Great Portland Street

Operated by RE-DEFINED

180 Great Portland Street

London, W1W 5QZ




At a glance

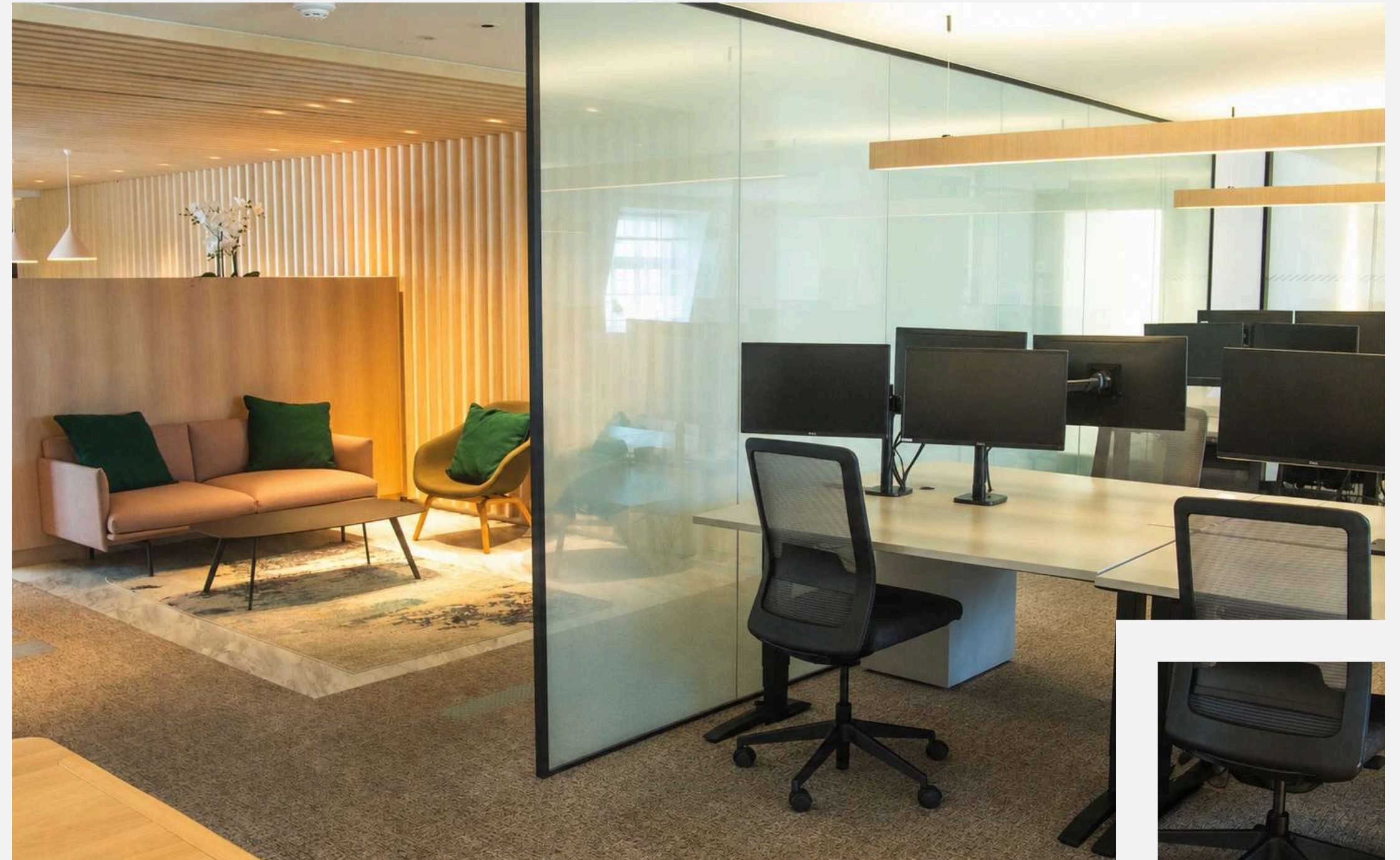
Set within the heart of Fitzrovia, 180 Great Portland Street offers a crisp, clean, design-led workspace in one of London's most established business districts.

This is a building that prioritises clarity over complexity - delivering everything your business needs, without the unnecessary extras.

Prime location

Moments from Great Portland Street, Regent's Park and Oxford Circus, the location brings together connectivity, culture and convenience in equal measure.

-  Great Portland Street
-  Regent's Park
-  Oxford Circus



Working at 180 Great Portland Street

Spaces at 180 Great Portland Street

180 Great Portland Street combines classic Fitzrovia architecture with a modern, efficient workplace approach.

The building has been thoughtfully maintained and upgraded to support contemporary occupiers, while retaining the character and professionalism of its surroundings.

This is a space built for businesses who value autonomy and independence, supported by a professional operational backbone that keeps everything running seamlessly behind the scenes.



Working at 180 Great Portland Street



Added Extras

180 Great Portland Street offers:

- 24-hour access
- secure bike storage
- showers and changing rooms
- breakout spaces
- disabled access throughout
- and a multi-faith room

Working at 180 Great Portland Street

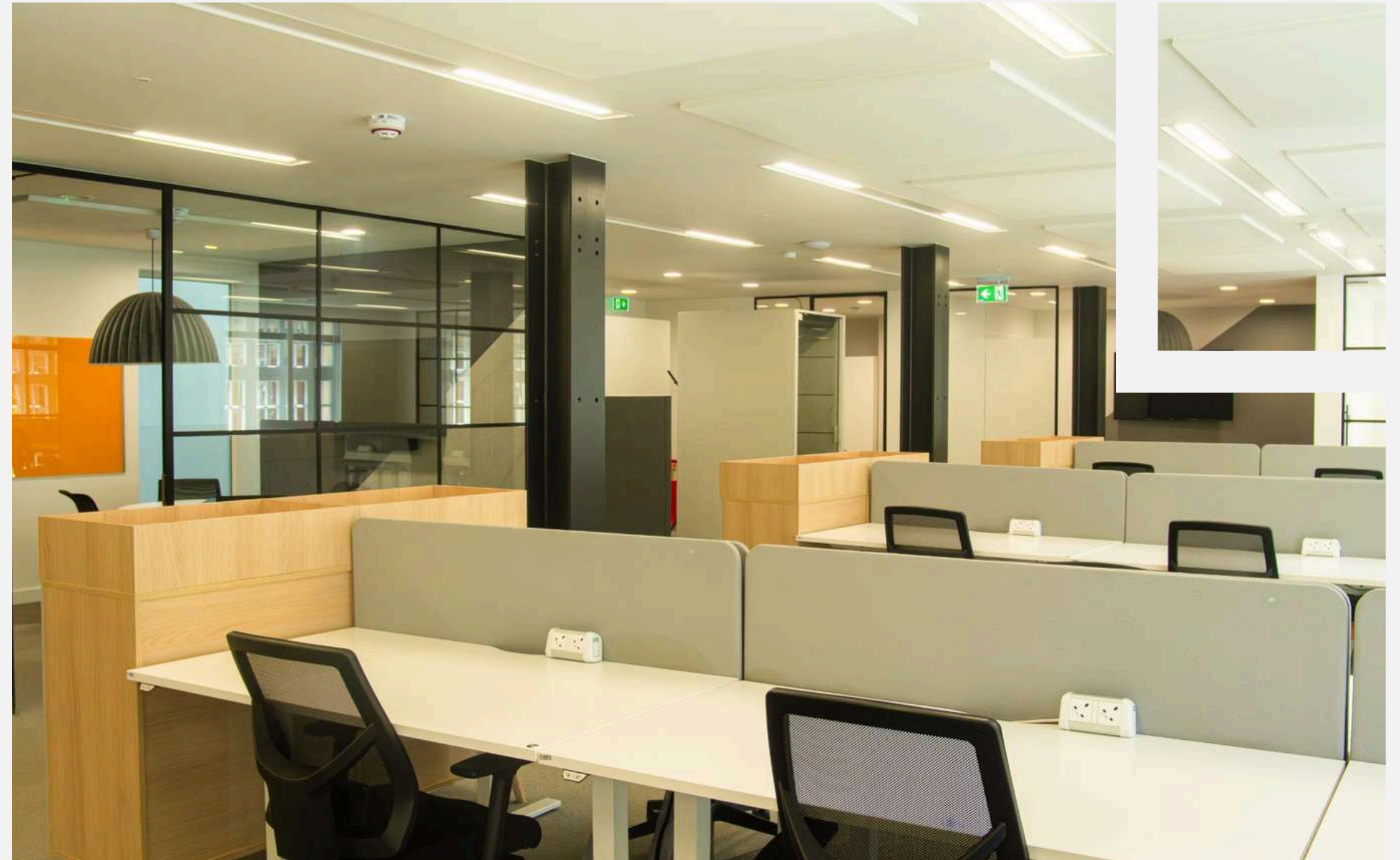
Availability

Currently Available - Two self-contained enterprise suites available on levels three and five, boasting 3,533 sq ft and 5,397 sq ft of modern, flexible workspace respectively.

Designed to support modern working patterns, each suite offers a blend of open-plan desk space, collaborative meeting areas and quieter breakout or focus spaces - allowing businesses to tailor how their teams work throughout the day.

The 3rd floor suite includes 24 desks, 14 agile desks, four meeting rooms, two boardrooms and phone booths, while the 5th floor provides 39 desks, 11 agile desks, six meeting rooms, a boardroom and four focus rooms.

Natural light, efficient floorplates and unit-level climate control help create a comfortable and productive working environment, while integrated operational support ensures occupiers can focus on their teams and business growth.



Working at 180 Great Portland Street

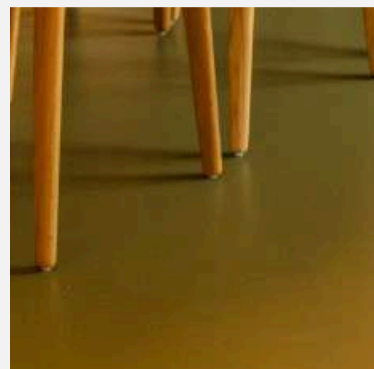
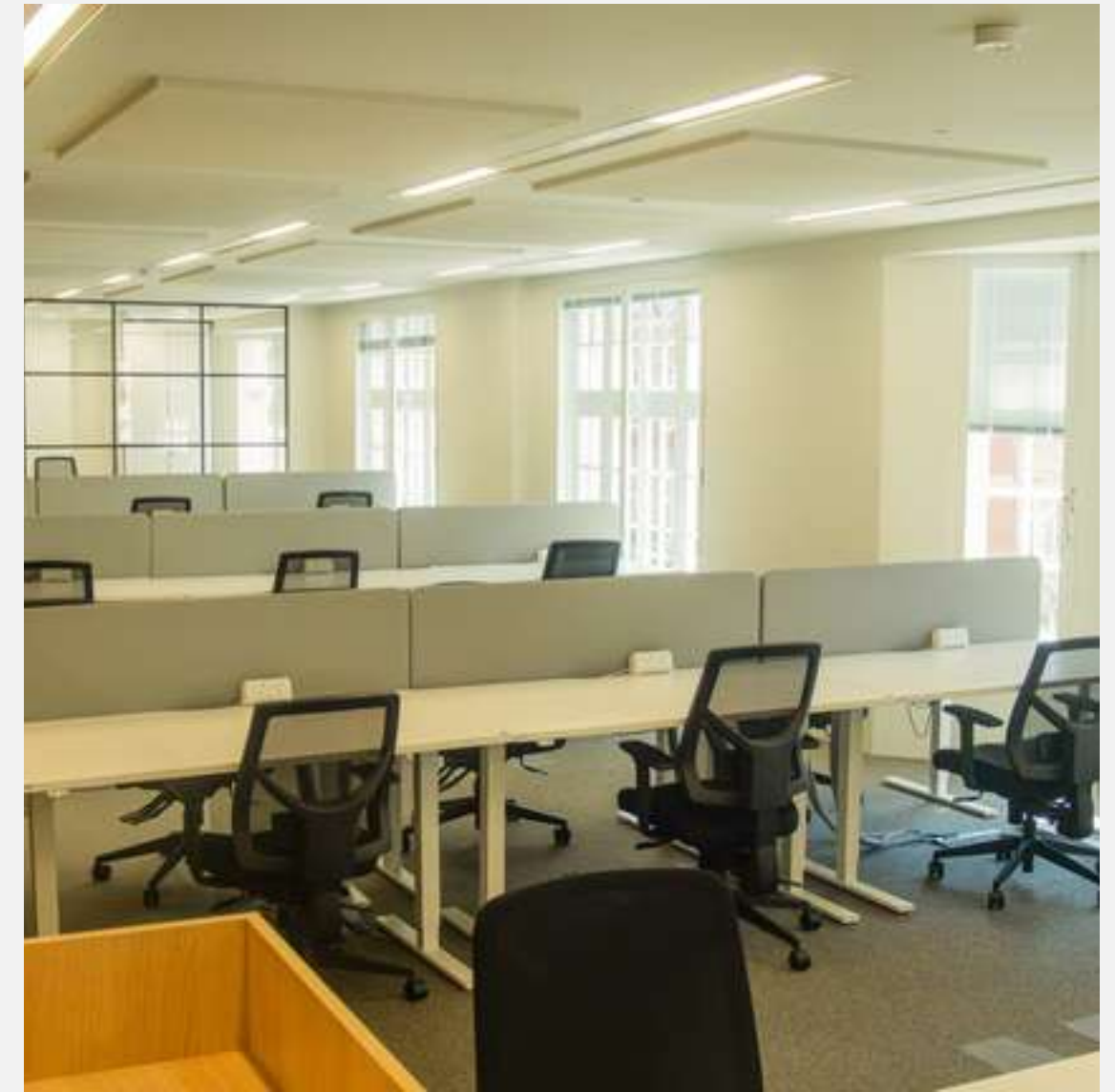
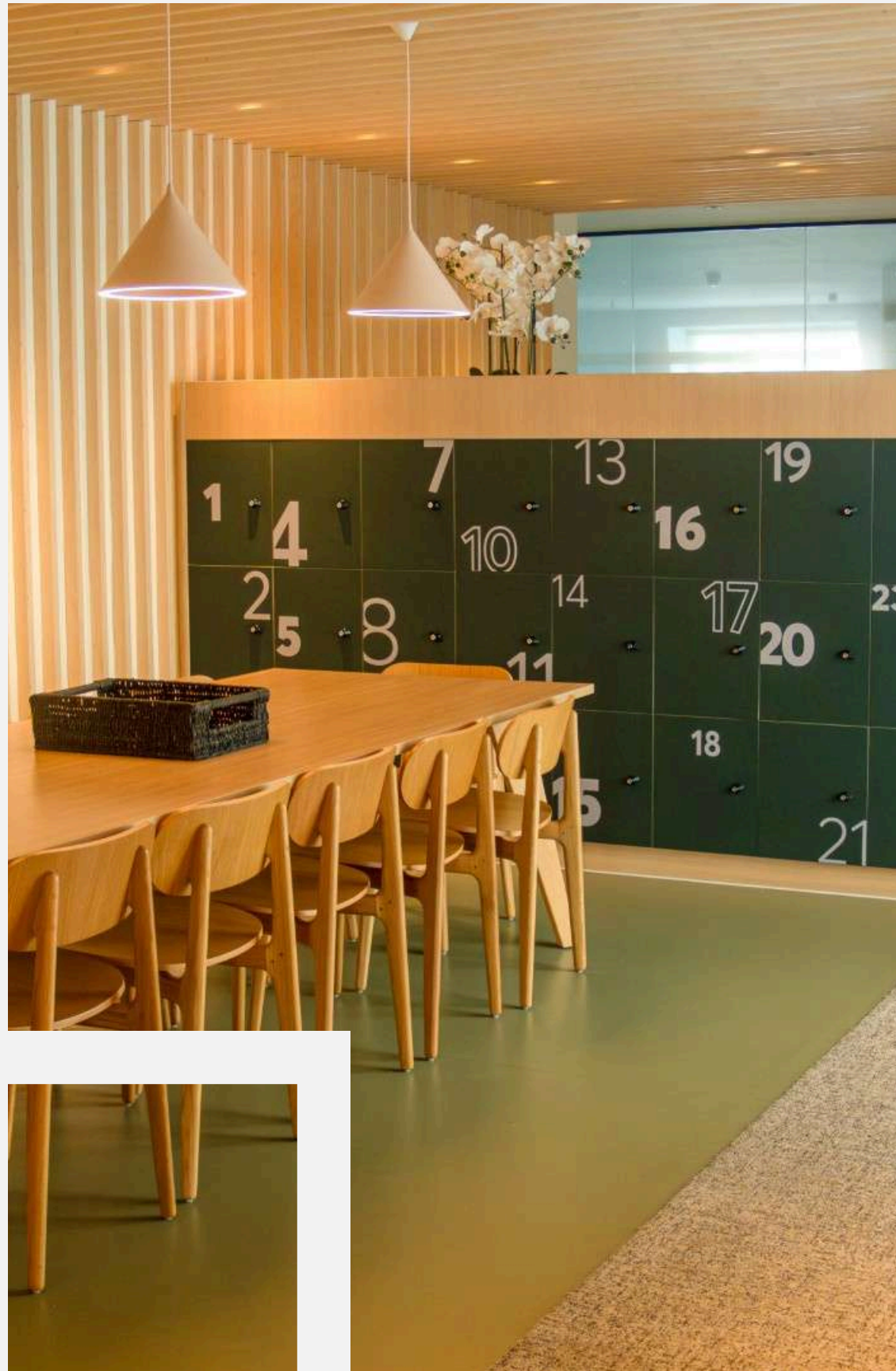


Streamlined finances

Terms starting from 12 months.

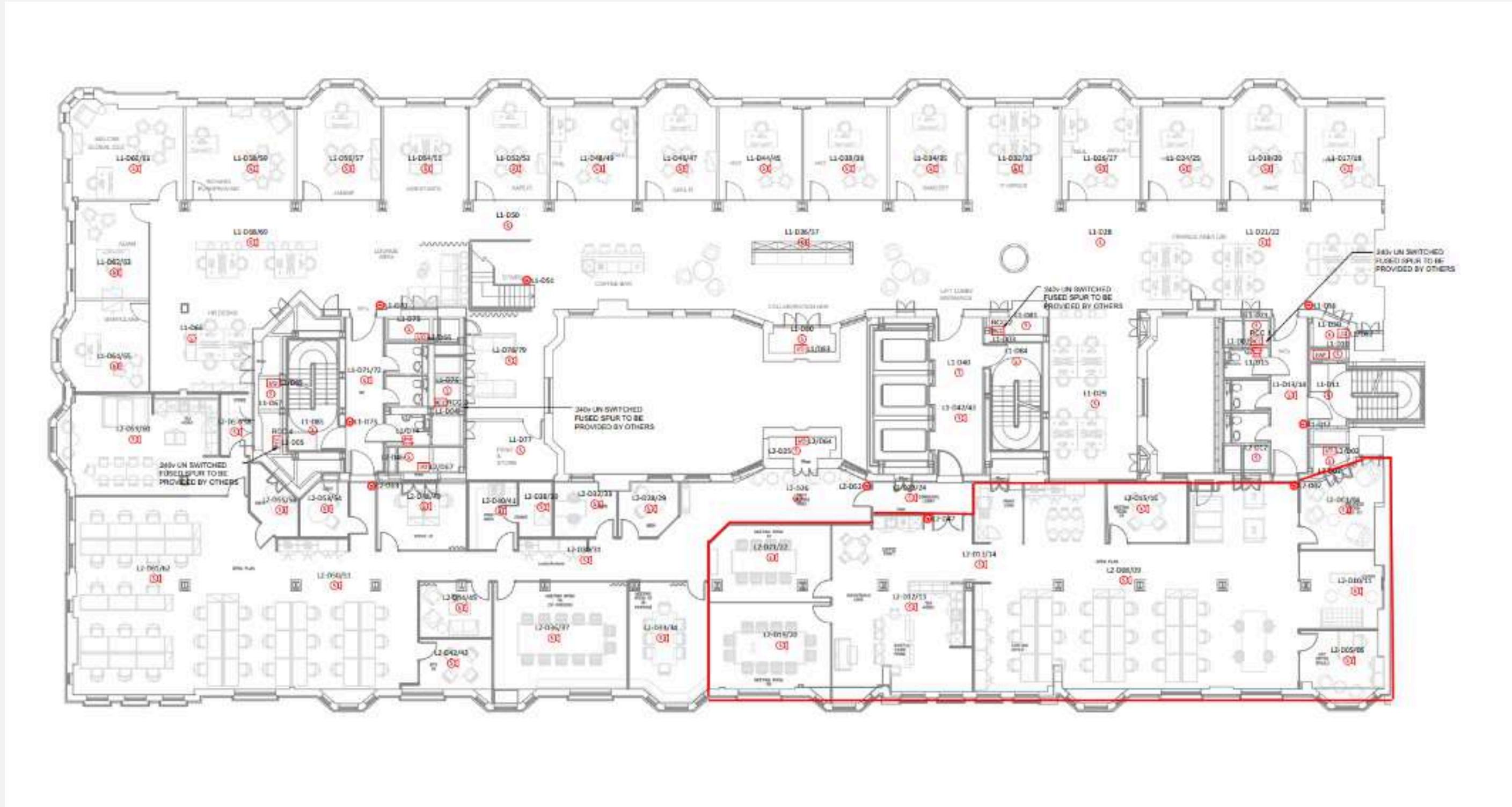
Total monthly cost inclusive of:

- Rent
- Service charges and insurance
- Business Rates
- Utilities
- Consumables including weekly stocking of tea, coffee, fruit, milk
- Wireless connectivity, IT & data, security & access control
- Cleaning
- Facilities management - i.e. maintenance, repairs and health & safety
- Furniture
- 24h access
- Secure Bicycle Storage
- Gym access
- Showers
- Changing Rooms
- Disabled Access
- Parents' Room



Floorplans

Third Floor



Floorplans

Fifth Floor



Contact

For more information on 180 Great Portland Street, please get in touch.

Ainsley Sutherland

Sales & Leasing Manager

ainsley@re-defined.co.uk

020 7908 5597

07977 760894

Angus Dady

Customer Relationship Manager

angus@re-defined.co.uk

020 7908 5597

07989 723499

